

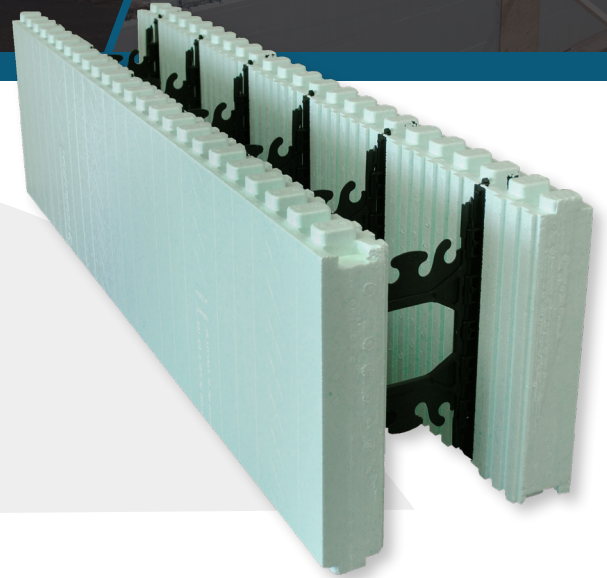
OPTIMIZER

Another key innovation brought to market by Nudura that will give installers and designers another product to make installation easier and faster.

Product Overview

The Optimizer is part of the Nudura ICF Series of Insulated Concrete Forms. Nudura Insulated Concrete Forms provide energy efficient, cost-effective building envelope solutions serving the architectural, commercial and residential markets.

The Optimizer offers installers a variety of benefits to save time and money during installation. Designed to be used as a height adjuster at the top of the wall, the Optimizer allows installers the ability to meet 17 different stack heights from 4ft (1.22m) to 12ft (3.66m). The forms are available in Nudura's standard core sizes of 6in (150mm) to 12in (300mm) giving users the freedom to use the Optimizer on any size job from commercial to residential. Nudura installers can now achieve floor to floor heights at any 6in (150mm) height increment without sacrificing interlock capability of the forms by using the Nudura Optimizer.

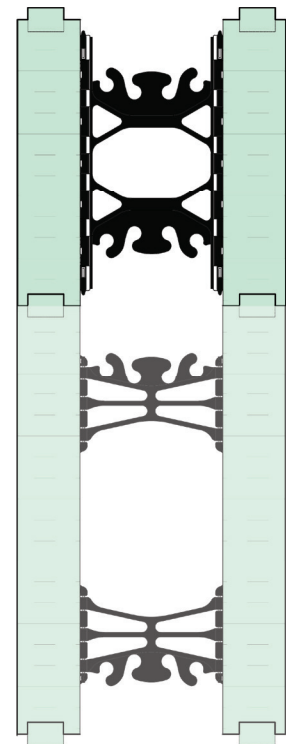


Meet 17 different stack heights between 4ft to 12ft (1.22m to 3.66m) without cutting

Features & Benefits

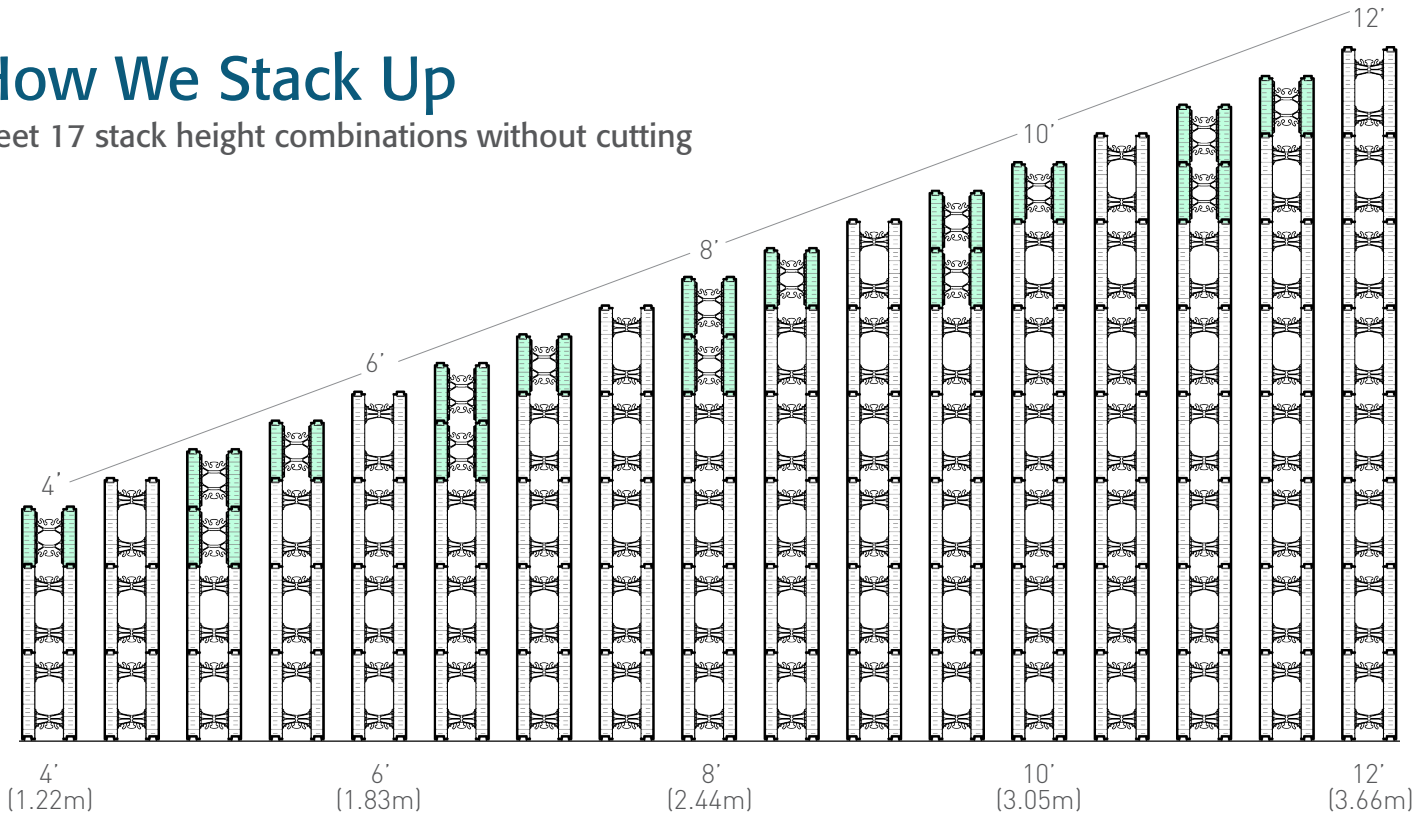
- 17 different stack heights (4ft to 12ft (1.22m to 3.66m))
- Lightweight and easy to handle
- Features Nudura's innovative patented technologies
- Eco-Friendly - no CFCs or HCFCs
- 100% recyclable

Improving the thermal performance of the building envelope is a key aspect when looking for energy efficient building materials. Optimizing R-Value with thermal mass has shown to be the best method of providing significant energy savings to building owners.



How We Stack Up

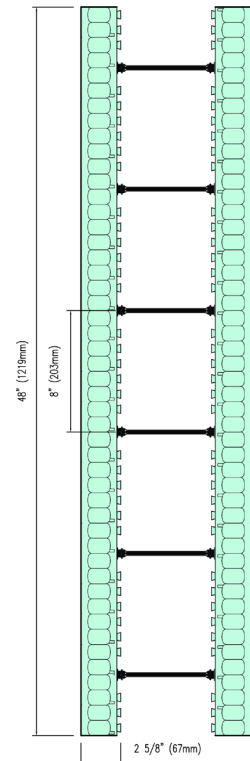
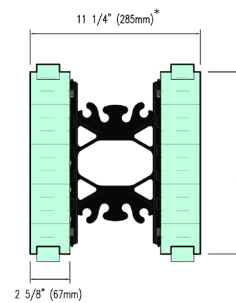
Meet 17 stack height combinations without cutting



Optimizer Wall Height Chart

Rows of 18" (457mm) High Forms	Row(s) of Optimizer	Height of Wall
4	2	8'-0" (2.44m)
5	1	8'6" (2.59m)
6	0	9'-0" (2.74m)
5	2	9'6" (2.90m)
6	1	10'-0" (3.05m)
7	0	10'6" (3.20m)
6	2	11'-0" (3.35m)
7	1	11'6" (3.51m)
8	0	12'-0" (3.66m)

*Dimension varies with Optimizer insert web width



Nudura Inc. | 27 Hooper Road, Unit 10 | Barrie, ON L4N 9S3 | 866.468.6299 | nudura.com

Tremco CPG brings together Tremco Incorporated's Commercial Sealants & Waterproofing and Roofing & Building Maintenance operating divisions; Dryvit Systems, Inc.; Nudura Inc.; Willseal; Weatherproofing Technologies, Inc. and Weatherproofing Technologies Canada, Inc.

Nudura® is a registered trademark of Nudura Inc.
Use of the ® symbol indicates registration with the US Patent & Trademark Office and the Canadian Intellectual Property Office.

07/2020



Construction Products Group

tremcocpg.com